



# INDOFINE Chemical Company, Inc.

121 Stryker Lane, Bldg. 30, Suite 1 • Hillsborough, NJ 08844 • U.S.A.

Phone: (908) 359-6778 • FAX: (908) 359-1179

website: [www.indofinechemical.com](http://www.indofinechemical.com)

e-mail: [chemical@indofinechemical.com](mailto:chemical@indofinechemical.com)

## CERTIFICATE OF ANALYSIS

Catalog Number: 020521

Product Name: **7-METHYLCOUMARIN**

CAS Number: [2445-83-2]

Lot Number: 1611917

Chemical Formula: C<sub>10</sub>H<sub>8</sub>O<sub>2</sub>

Molecular Weight: 160.17

Appearance: Off white powder

Melting Point: 128-130°C

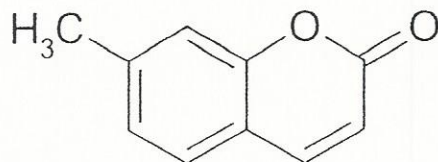
Solubility in hot methanol: Very faint turbidity  
(100 mg. in 5 ml.)

TLC: Hexane:Ethyl Acetate (8:2)

Moisture (KF): 0.31%

Storage: Store in a cool, dry place

Purity(HPLC): 99.36%





# INDOFINE Chemical Company, Inc.

121 Stryker Lane, Bldg. 30, Suite 1 • Hillsborough, NJ 08844 • U.S.A.

Phone: (908) 359-6778 • FAX: (908) 359-1179

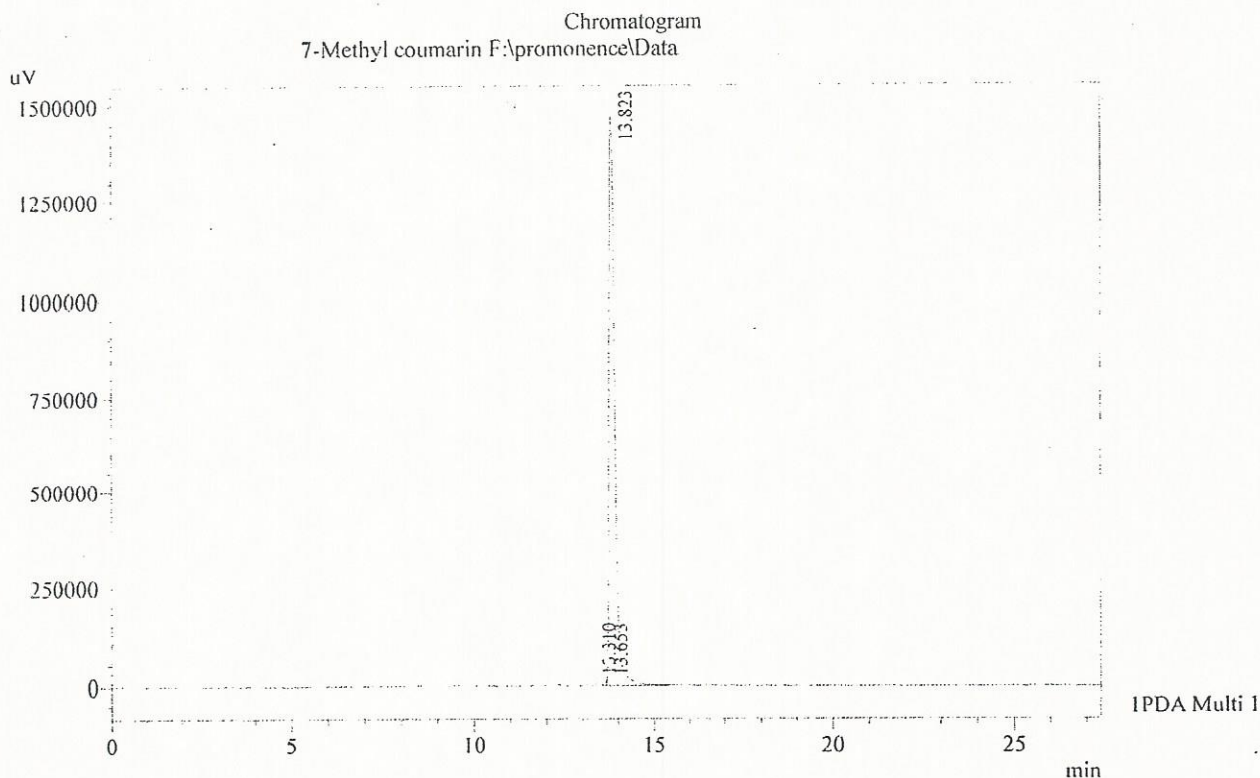
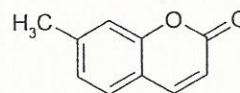
website: [www.indofinechemical.com](http://www.indofinechemical.com)

e-mail: [chemical@indofinechemical.com](mailto:chemical@indofinechemical.com)

## HPLC ANALYSIS

Acquired by : Admin  
 Sample Name : 7-Methyl coumarin  
 Sample ID : 3.0 kg Lot  
 Injection Volume : 1 uL  
 Data Filename : 261016E.lcd  
 Method Filename : Linear Gradient.M.lcm  
 Report Filename : Default.lcr

Catalog No.: 020521  
 Product Name: 7-Methylcoumarin  
 Lot No.: 1611917



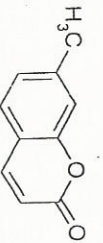
1 IPDA Multi 1 / 254nm 4nm

PeakTable

Peak#	Name	Ret. Time	Area	Area %	Relative Retention Time
1	RT:13.310	13.310	75178	0.43	0.96
2	RT:13.653	13.653	36095	0.21	0.99
3	7-Methyl coumarin	13.823	17396819	99.36	1.00
Total			17508092	100.00	



**INDOFINE Chemical Company, Inc.**  
 121 STRYKER LANE  
 BLDG. 30, SUITE 1  
 HILLSBOROUGH, NJ 08844



Catalog No.: 020521  
 Product Name: 7-Methylcoumarin  
 Lot No.: 1611917

lot\_proton-1-2.jdt



2.455



```

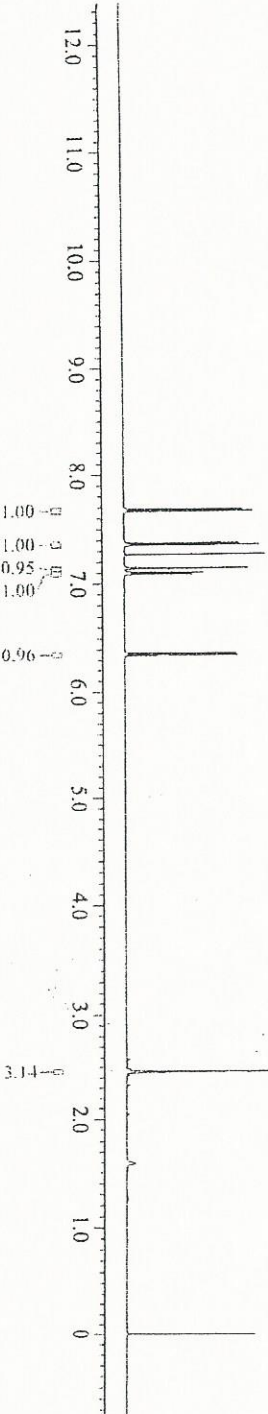
---- PROCESSING PARAMETERS ----
sepf( 0.2[Hz], 0.0[sec] )
trapenrd( 0[%], 0[%], 80[%], 100[%] )
zerofill( 1 )
fft( 1, TRUE, TRUE )
machinphase
ppm
reference( -0.01707[ppm], 0[ppm] )
reference( -0.0[ppm], 0[ppm] )
  
```

```

Instrument Id   = NMR-02
Author         = paz1273
Reviewed by    = PSR
Solvent        = CHLOROFORM-D
Spectrometer   = JNM-EC250OR/S1
Experiment     = proton_jxp
  
```

```

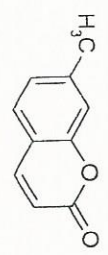
Acquisition Parameter
X_Domain        = 1H
X_Offset        = 7.0[ppm]
X_Sweep         = 11.28158845[Hz]
Scans           = 16
Relaxation_Delay = 2[sec]
  
```



X : parts per Million : Proton



**INDOFINE Chemical Company, Inc.**  
 121 STRYKER LANE  
 BLDG. 30, SUITE 1  
 HILLSBOROUGH, NJ 08844



Catalog No.: 020521  
 Product Name: 7-Methylcoumarin  
 Lot No.: 1611917

lot\_proton-1-2.jdf

7.681  
7.661

7.370  
7.354

7.142  
7.102  
7.086

6.363  
6.345



----- PROCESSING PARAMETERS -----  
 ssepp ( 0.2[Hz], 0.0[s] )  
 lzapexoid ( 0[s], 0[s], 80[s], 100[s] )  
 zerofill ( 1 )  
 fft ( 1, TRUE, TRUE )  
 machinephase  
 ppm  
 reference { -0.01707 [ppm], 0 [ppm] }  
 reference { -0.0 [ppm], 0 [ppm] }

Instrument Id = NMR-02  
 Author = par1273  
 Reviewed by = PSR  
 Solvent = CHLOROFORM-D  
 Spectrometer = JNM-ECZ500R/51  
 Experiment = proton\_jxp

Acquisition Parameter  
 X Domain = 1H  
 X\_Offset = 7.0 [ppm]  
 X\_Sweep = 11.28158845 [kHz]  
 Scans = 16  
 Relaxation\_Delay = 2 [s]

